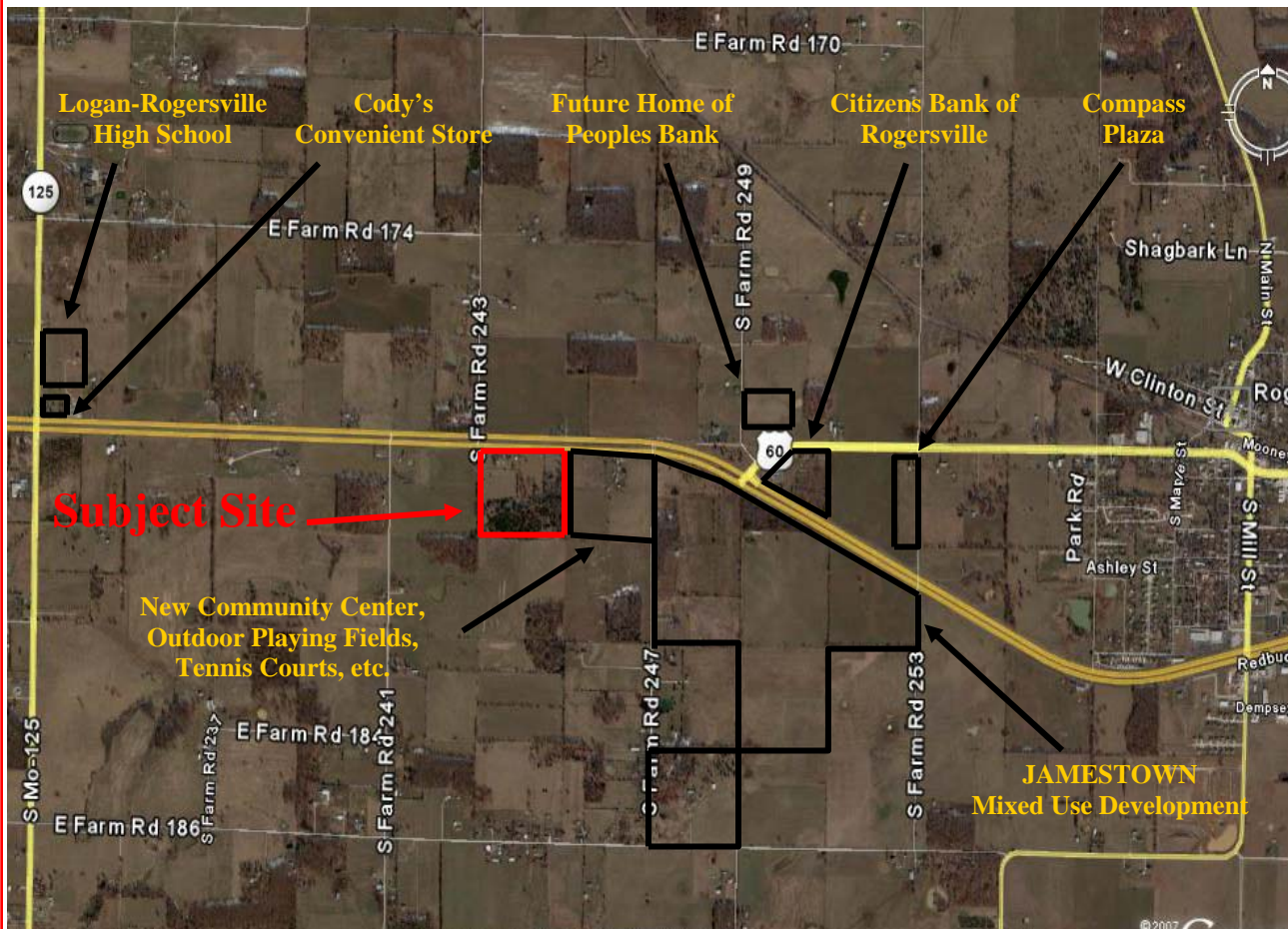


## Prime Development Land

U.S Highway 60 Frontage  
Rogersville, MO



**David Reid**

davidreid@cjrcommercial.com

Office: 417888-3279

Mobile: 417-766-0770

3600 S National, Springfield, MO 65804

Web Site: [www.cjrcommercial.com](http://www.cjrcommercial.com)

DISCLAIMER: The information contained herein is not guaranteed as to completeness or accuracy, and is submitted without representation or warranty. You are urged to make your own analysis of the contents presented herein and to investigate and verify to your own satisfaction all factors having a bearing on your decision. It is recommended that your attorney and accountant advise you on all legal and tax matters. Qualified engineers and tradesman are recommended for determining questions on all physical aspects of site and improvements.

## **PRIME DEVELOPMENT LAND**

**Rogersville, Missouri**

**Greene County**

**US Highway 60**

**Address: 9170 E. US Highway 60**

**+/- 33.86 Acres**

**PRICED @ \$1,500,000**

**+/- 1,323 US Highway 60 Front Footage**

**Close to Jamestown Mixed-Use Development**

**Immediately West of Rogersville Community Center  
(Under Development)**

**Water and Sewer Close (+/- 1,500 Feet to the East)**

**Should be Easily Re-Zoned to Commercial or Combination of  
Commercial/Multi-Family Residential**



**David Reid**

**davidreid@cjrcommercial.com**

**Office: 417888-3279**

**Mobile: 417-766-0770**