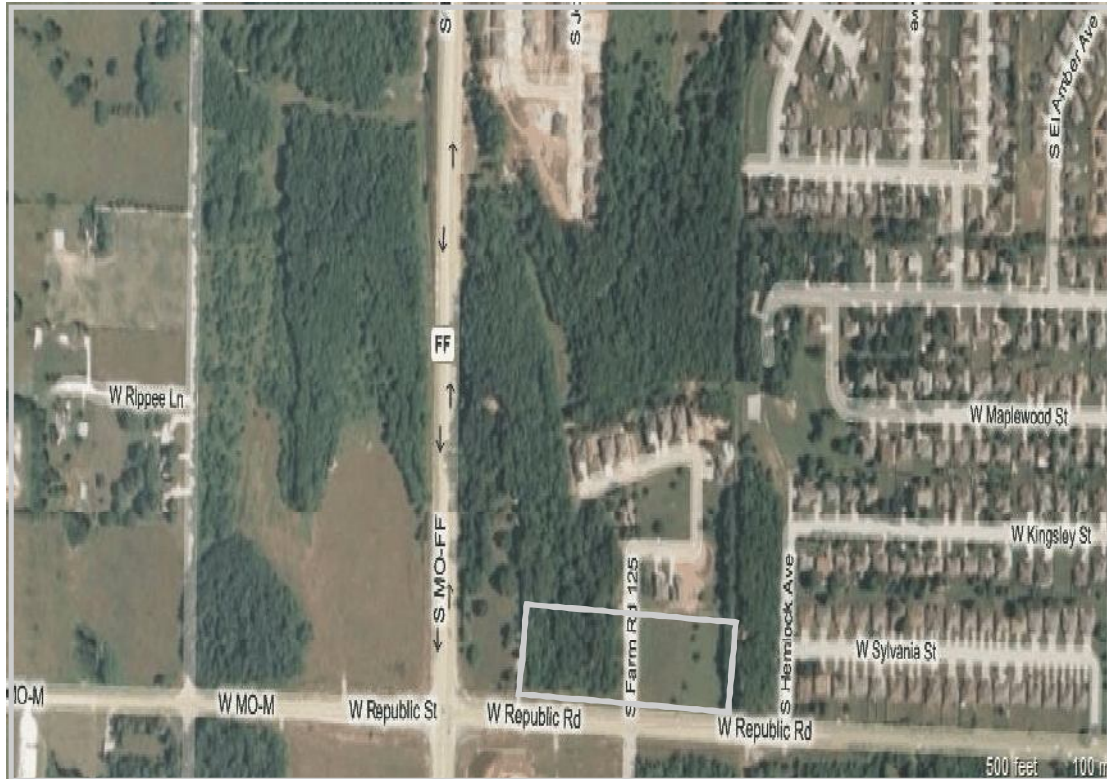


**Commercial Development Land
FOR SALE
3900 W. Block Republic Road Springfield, Missouri 65810**



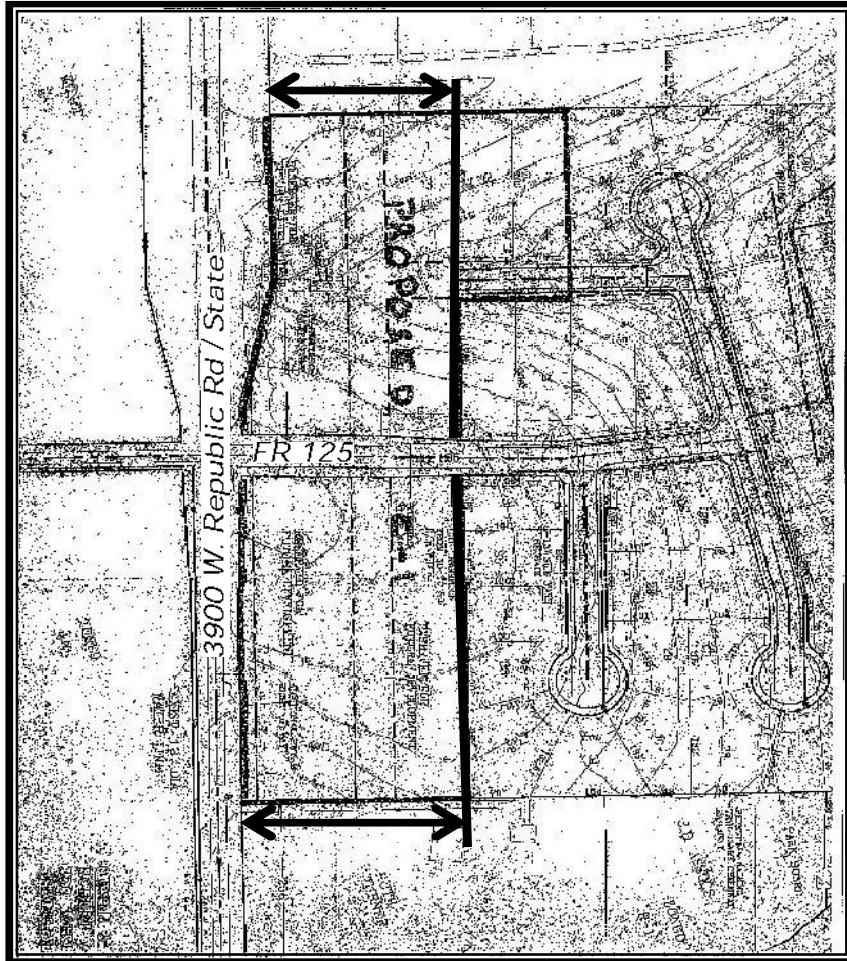
**+/-6.52 Acres
\$6.95 Per Square Foot
Will Subdivide**

**Offered by:
A.L. "Skip" Liebman
Direct: 417-888-3231 / Email: sliebman@cjrcommercial.com**

CJR COMMERCIAL GROUP: 3600 S. National, Building-B Springfield, MO 65807 Office: 417.882.5710 / Fax: 417.888.3290

Disclaimer - CJR Commercial Group: The information contained herein is not guaranteed as to completeness or accuracy, and is submitted without representation or warranty. You are urged to make your own analysis of the contents presented herein and to investigate and verify to your own satisfaction all factors having a bearing on your decision. It is recommended that your attorney and accountant advise you on all legal and tax matters. Qualified engineers and tradesmen are recommended for determining questions on all physical aspects of site and improvement.

**Commercial Development Land
FOR SALE
3900 W. Block Republic Road Springfield, Missouri 65810**



**Offered by:
A.L. "Skip" Liebman
Direct: 417-888-3231 / Email: sliebman@cjrccommercial.com**

CJR COMMERCIAL GROUP: 3600 S. National, Building-B Springfield, MO 65807 Office: 417.882.5710 / Fax: 417.888.3290

Disclaimer - CJR Commercial Group: The information contained herein is not guaranteed as to completeness or accuracy, and is submitted without representation or warranty. You are urged to make your own analysis of the contents presented herein and to investigate and verify to your own satisfaction all factors having a bearing on your decision. It is recommended that your attorney and accountant advise you on all legal and tax matters. Qualified engineers and tradesmen are recommended for determining questions on all physical aspects of site and improvement.